

Anti-CDKL3 Antibody
Rabbit polyclonal antibody to CDKL3
Catalog # AP60104**Specification**

Anti-CDKL3 Antibody - Product Information

Application	WB, IHC
Primary Accession	Q8IVW4
Other Accession	Q8BLF2
Reactivity	Human, Mouse, Rat, Monkey
Host	Rabbit
Clonality	Polyclonal
Calculated MW	67514

Anti-CDKL3 Antibody - Additional Information**Gene ID** 51265**Other Names**

NKIAMRE; Cyclin-dependent kinase-like 3; Serine/threonine-protein kinase NKIAMRE

Target/Specificity

Recognizes endogenous levels of CDKL3 protein.

Dilution

WB~~WB (1/500 - 1/1000), IH (1/100 - 1/200)

IHC~~1:100~500

Format

Liquid in 0.42% Potassium phosphate, 0.87% Sodium chloride, pH 7.3, 30% glycerol, and 0.09% (W/V) sodium azide.

Storage

Store at -20 °C. Stable for 12 months from date of receipt

Anti-CDKL3 Antibody - Protein Information**Name** CDKL3 ([HGNC:15483](#))**Cellular Location**

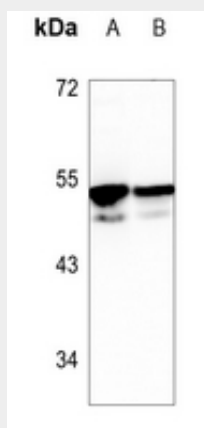
Cytoplasm.

Anti-CDKL3 Antibody - Protocols

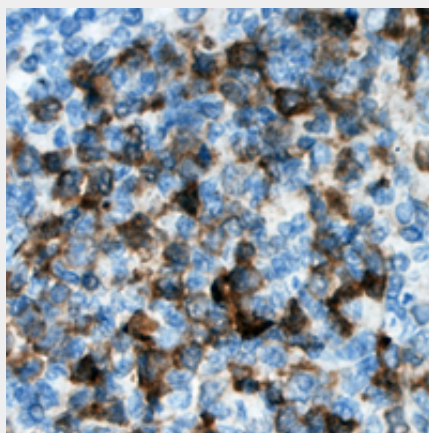
Provided below are standard protocols that you may find useful for product applications.

- [Western Blot](#)
- [Blocking Peptides](#)
- [Dot Blot](#)
- [Immunohistochemistry](#)
- [Immunofluorescence](#)
- [Immunoprecipitation](#)
- [Flow Cytometry](#)
- [Cell Culture](#)

Anti-CDKL3 Antibody - Images



Western blot analysis of CDKL3 expression in mouse heart (A), rat heart (B) whole cell lysates.



Immunohistochemical analysis of CDKL3 staining in human lymph node formalin fixed paraffin embedded tissue section. The section was pre-treated using heat mediated antigen retrieval with sodium citrate buffer (pH 6.0). The section was then incubated with the antibody at room temperature and detected using an HRP conjugated compact polymer system. DAB was used as the chromogen. The section was then counterstained with haematoxylin and mounted with DPX.

Anti-CDKL3 Antibody - Background

KLH-conjugated synthetic peptide encompassing a sequence within the center region of human CDKL3. The exact sequence is proprietary.